

# NOISE ENCLOSURE FOR NITROGEN GENERATOR : NTR-PARK21



## PRODUCT OVERVIEW

- Noise reduction performance : - 15 db(A) (80% reduction in noise perception)
- Heat exchange controlled by six internal silent fans 120 mm (4,72 in)
- Efficient air circulation is guaranteed at 600 m3/h to keep optimal acoustic insulation
- Worldwide electrical compatibility [enclosures are supplied with European, US, Japanese or UK plugs]



| Dimensions                                  | External Dimensions |      | Internal Dimensions |      |
|---|---------------------|------|---------------------|------|
|   | CM                  | INCH | CM                  | INCH |
| Depth                                       | 120                 | 47.2 | 109                 | 42.9 |
| Width                                       | 51                  | 20.1 | 40                  | 15.7 |
| Height                                      | 80                  | 31.5 | 75                  | 29.5 |
| Noise enclosure weight<br>25 kg      55 lbs |                     |      |                     |      |

# EASY

to install : no downtime, no cables or pipes to be disconnected

- access for generator servicing and ballast
- visual check for operation



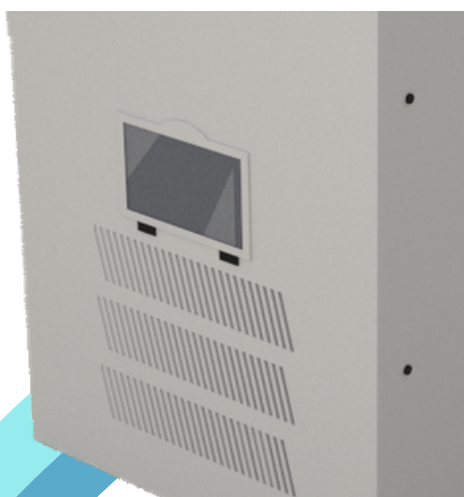
Top cover can be easily removed



# DETAILED TECHNICAL SPECIFICATIONS



## FRONT OPENING WINDOW



## EASY VISUAL CHECK FOR OPERATION (Green LED)



## PIPE AND CABLE ARE GOING THROUGH A POLYPROPYLENE BRUSH



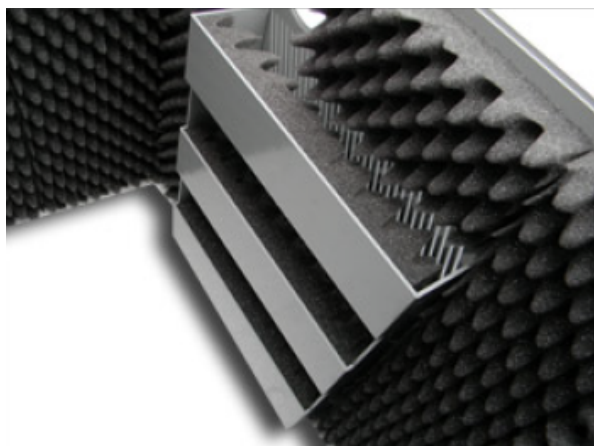
## LOCKABLE CONNECTOR



# DETAILED TECHNICAL SPECIFICATIONS



## INLET AIR MANAGEMENT SYSTEM

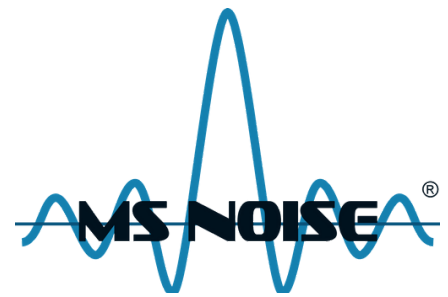


Increased heat elimination while keeping optimal soundproofing

CLICK ON THIS PICTURE TO SEE  
WHAT **MS NOISE** CAN DO FOR YOU



# AVAILABLE OPTIONS

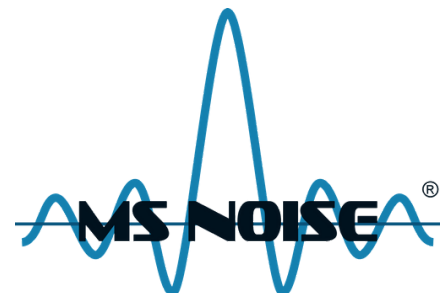


## OVERHEATING ALARM



- In case of any air intake or air exhaust obstruction, the temperature inside the noise enclosure could well exceed the limits set by nitrogen generator manufacturers.
- Check the LEDS ! if the temperature goes above an acceptable limit, the alarm will sound (a red led will come on and an audible continuous alarm will start ~ 90 dB
- Alarm Test function: test switch button available to ensure batteries are charged and alarm is working. When the switch is pushed, the red LED will come on and a continuous audible sound will start if the system is operating correctly.
- Requires 2 x 1.5 AA Batteries - independent from noise enclosure main power supply.

# SUMMARY



| Description                   | Part number           |
|-------------------------------|-----------------------|
| <b>NOISE ENCLOSURE</b>        | <b>NTR-BOX-PARK21</b> |
| OVERHEATING ALARM TEMPERATURE | NTR-ALA-PARK21        |

